



WN
wnproperties.co.uk
PROPERTIES

Coram Green, Hutton

WN
PROPERTIES

Coram Green Hutton

£2,250.00 pcm

Recently refurbished four bedroom family home located in the heart of Hutton. The property offers a modern finish throughout and includes kitchen with integrated appliances, en-suite to principal bedroom on the second floor, family bathroom on the first floor and four bedrooms with fitted wardrobe space. To the rear there is a tidy, low maintenance garden and off-street parking bays to the front. The property is situated within 0.2 miles of local shops and within one mile of Shenfield station and shopping Broadway. Available immediately, unfurnished. EPC C.



Entrance Hall

Living Room

13' 0" x 13' 0" (3.96m x 3.96m)

Kitchen/Diner

8' 6" x 16' 1" (2.59m x 4.90m)

Utility Area

8' 6" x 2' 3" (2.59m x 0.69m)

Conservatory

7' 3" x 6' 1" (2.21m x 1.85m)

First Floor Landing

Bedroom Two

9' 10" x 9' 2" (2.99m x 2.79m)

Bedroom Three

6' 7" x 11' 6" (2.01m x 3.50m)

Bedroom Four

9' 10" x 8' 7" (2.99m x 2.61m)

Family Bathroom

Second Floor Landing

Principal Bedroom

16' 5" maximum x 14' 2" (5.00m x 4.31m)

En-suite

Store/Study

8' 2" x 5' 9" (2.49m x 1.75m)

Externally

Rear garden with shed and access to front via gated passageway. Off-street parking.

A one week holding deposit is required to secure this property. Please ask for a copy of our 'Guide for Tenants' for a full list of costs applicable to this or any of our properties. Please note your holding deposit is at risk if you withdraw from the transaction or do not disclose something that may affect your ability to pass references.



Score	Energy rating	Current	Potential
92+	A		
81-91	B		
69-80	C	74 C	79 C
55-68	D		
39-54	E		
21-38	F		
1-20	G		

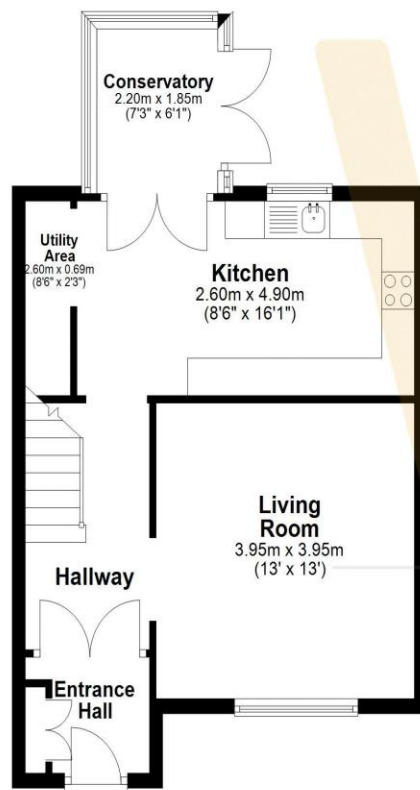
148 Hutton Road, Shenfield
Brentwood
Essex CM15 8NL

01277 225191
lettings@wnproperties.co.uk
wnproperties.co.uk



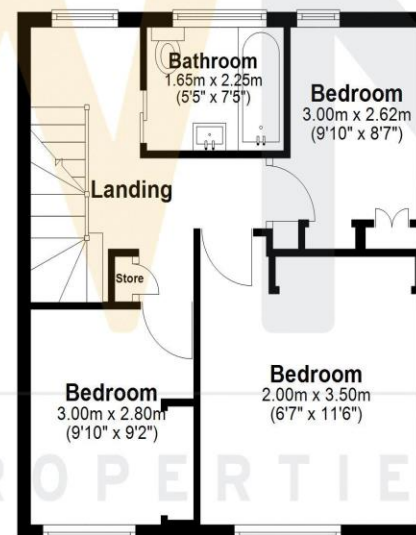
Ground Floor

Approx. 45.0 sq. metres (484.8 sq. feet)



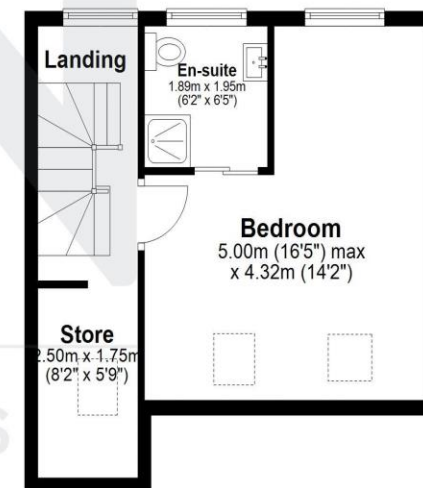
First Floor

Approx. 42.0 sq. metres (451.7 sq. feet)



Second Floor

Approx. 31.8 sq. metres (342.6 sq. feet)



Total area: approx. 118.8 sq. metres (1279.1 sq. feet)